

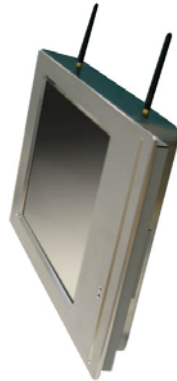
## Wincomm Delivers a 17" KIOSK Solution w/ Solid Silver Aluminum Bezel

*With Built-in Barcode/Magnetic Stripe Combo Reader & 802.11n WLAN Module*

**Hsin-Chu, Taiwan, March 4, 2010** – WLP-7821-17 is Wincomm's all-in-one fanless industrial panel PC with Intel Core Duo processor integrated with 17" LCD panel. Our latest customization implementation is to integrate a barcode/magnetic stripe combo reader, resistive touch panel and 802.11n wireless LAN module for this all-in-one system to act as a worker entry/assignment Kiosk station at the factory production line.



Combo card reader integration



Two dual-band WLAN antennas



Chassis enclosure w/ I/O cover (rear)

### Built-in barcode/magnetic stripe combo reader

The left side of the WLP-7821-17 aluminum front bezel is extended to include a barcode & magnetic stripe combo reader with the associated reader board and bracket are firmly integrated.

This two-in-one reader integrates both barcode and magnetic stripe technologies in the single unit. One side of the slot is for barcode card swiping, the opposite side is for magnetic stripe card swiping.

The magnetic stripe card reader is designed to conform w/ International ISO 7801 & 7803 standards which are followed by most ATM or credit cards, ID cards, and transportation tickets.....etc.

The card reader communicates with the system through USB interface and gets the power through it.

### Internal dual band wireless LAN module

The WLP-7821-17 has an internal mini-PCI expansion socket and Wincomm chooses to use a latest 802.11 a/b/g/n compliant wireless module for best wireless network connectivity.

Besides 2.4 GHz frequency, 802.11n also supports 5 GHz which can avoid occasional interference from 2.4 GHz devices such as microwave ovens, cordless telephones and Bluetooth devices.

The data rate per stream for 802.11n is up to 150 Mbps (40 MHz bandwidth), with MIMO (multi-input and multi-output) supports and two dual-band antennas, this 802.11n wireless module can transmit & receive data



simultaneously for up to 300 Mbps data rate (2-stream) and greatly improve the network throughputs. 802.11n also improves the effective wireless range to 70 m (indoor) & 250 m (outdoor) distance which is near twice of the 802.11 b/g.

### General features

Beside card reader and wireless LAN module, below are the main features --

- Intel Core Duo 1.66 G processor & 945GME + ICH7M chipset
- 17" LCD w/ 1280x1024 resolution and 300 nits brightness.
- 5-wire resistive touch panel w/ typical 80% light transmittance.
- Two SODIMM socket for up to 2 GB DDR2-667 dual-channel system memory.
- One SATA 2.5" HDD drive bay w/ anti-vibration mechanism.
- One Compact Flash (CF) card slot.
- One mini PCI socket. (mainly for wireless LAN module)
- One DVI-I output and four COM ports.
- 80 W external universal power supply w/ 12V DC output.
- Chassis type enclosure housing w/ I/O cover.
- Dimension (W x H x D): 548 x 409 x 79 mm (w/ I/O cover)      Weight (net): 10 Kg (approximate)
- Mounting interface: VESA 75 x 75 mm & 100 x 100 mm

### Summary

With the all-in-one integration of barcode/magnetic stripe combo reader and powerful 802.11n wireless module w/ dual antennas, Wincomm expands our WLP-7821-17 fanless industrial touch panel PC to a special Kiosk application and provide our customization service w/ best design capability & flexibility.

###

If you have any questions or further requests, please feel free to contact our Sales representatives or mail directly to [sales\\_support@wincomm.com.tw](mailto:sales_support@wincomm.com.tw)

### Wincomm Corporation

3F, No. 14, Prosperity Road II, Science-Based Industrial Park, Hsinchu, Taiwan R.O.C.

Tel: +886 3 578 0000    Fax: +886 3 578 0295      Web: [www.wincomm.com.tw](http://www.wincomm.com.tw)