

WLP-7B20 Series

User's Manual



V1.4

Copyright © 2016, ALL RIGHTS RESERVED.

All other brand names are registered trademarks of their respective owner

Copyright Notice
Copyright © 2016
All Rights Reserved.
Printed in Taiwan.

The information contained in this document is subject to change without any notices.

Acknowledgments

Greeting & Setup

Thank you for purchasing the WLP-7B20 Panel PC. We wish that this unit will be durable and reliable in providing your needs. Please follow the instructions below to ensure the unit continues to have high performance

Unpacking

After opening the carton, there will be a unit with an accessory box. Examine the contents to see if there are damages to the unit and if all accessories are present.

Setting up

Please read this manual carefully and remember to keep this manual for future reference.

Safety Instructions & Cleaning

The unit has undergone various tests in order to comply with safety standards. Inappropriate use may be dangerous. Please remember to follow the instructions below to insure your safety during the installation and operating process.

Transporting & Placement of unit

-
1. When moving the unit on a cart; be very cautious. Quick stops, excessive forces and uneven surfaces may cause the cart to overturn thus risking the unit to fall to the ground.
 2. If the Monitor display unit does fall to the ground, immediately turn the power off and disconnect cords. Then contact a service technician for repairs. Continual use of the unit may result cause a fire or electric shock. Also, do not repair the unit on your own.
 3. Having two or more people transporting the display unit is recommended. In addition, when installing the open frame by suspending it also requires two or more people.
 4. Before suspending the unit, make sure the material used for suspension is sturdy and stable. If not properly suspended, the display unit may fall and cause serious injury to people standing nearby as well as to the unit itself.
 5. If you wish to mount the display unit, remember to use only the mounting hardware recommended by the manufacturer.

Electrical and Power Source Related

1. This Monitor display unit must operate on a power source as shown on the specification label. If you are not sure what type of power supply used in the area, consult your dealer or local power supplier.
2. The power cords must not be damaged. Applied pressure, added heat, and tugging may damage the power cord.
3. The power cord must be routed properly when setup takes place. We advise that this aspect measure is to prevent people from stepping on the cords or while the unit is suspended to prevent flying objects from getting tangled with

the unit.

4. Do not overload the AC outlets or extension cords. Electrical shocks or fires may occur from overloading.
5. Do not touch the power source during a thunderstorm.
6. If your hands are wet, do not touch the plug.
7. Use your thumb and index finger, grip firmly on the power cord to disconnect from the electrical socket. By pulling the power cord, may result in damaging it.
8. If the unit is not going to be in use for an extended period of time, remember to disconnect the unit.
9. Connect the unit to a power source with the same numerical value as spec. label shown. Please use only the power cord provided by the dealer to ensure safety and EMC compliance.

Various Factors of Environment

1. Do not insert objects into the openings.
2. Do not have liquids seep into the internal areas of the Monitor display unit.
3. Having liquids seep in or inserting objects into the unit may result in electric shocks from taking and/or short circuiting the internal parts.
4. Do not place the Monitor display unit in the presence of high moisture areas.
5. Do not install the Monitor display unit in a wet environment.
6. Do not place near unit near heat generating sources.
7. Do not place the unit in a location where it will come in contact with fumes or steam.
8. Remember to keep the Monitor display unit away from the presence of dust.

-
9. If water has flow in or seep in, immediately disconnect the open frame unit. Then contact a service technician for repairs.

Ventilation Spacing

1. Do not cover or block the openings on the top and back sides of the display unit. Inadequate ventilation may cause overheating thus reducing the lifespan of the unit.
2. Unless proper ventilation is present, do not place unit in an enclosed area; such as a built-in shelf. Keep a minimum distance of 10 cm between the display unit and wall.

Cleaning the unit

1. Remember to turn off the power source and to unplug the cord from the outlet before cleaning the unit.
2. Carefully dismount the unit or bring the unit down from suspension to clean.
3. Use only a dry soft cloth or clean room wiper when cleaning the LCD panel or touch screen surface. Use a soft cloth moistened with mild detergent to clean the display housing.
4. Remember to avoid having liquids seep into the internal components.

Servicing, Repairing, Maintenance & Safety Checks

1. If the unit is not functioning properly, observe the performance level of the display closely to determine what type of servicing is needed.
2. Do not attempt to repair the Monitor display unit on your own. Disassembling the cover exposes users' to high voltages and other dangerous conditions. Notify and request a qualified service technician for servicing the unit.

-
3. If any of the following situations occur turn the power source off and unplug the unit. Then contact a qualified service technician
 - i. A liquid was spilled on the unit or objects have fallen into the unit.
 - ii. The unit is soaked with liquids.
 - iii. The unit is dropped or damaged.
 - iv. If smoke or strange odor is flowing out of the open frame unit.
 - v. If the power cord or plug is damaged.
 - vi. When the functions of the unit are dysfunctional.
 4. When part replacement is needed. Make sure service technician uses replacement parts specified by the manufacturer, or those with the same characteristics and performance as the original parts. If unauthorized parts are used it may result in starting a fire, electrical shock and/or other dangers.

Battery Installation

Follow below instructions and notice the caution for replacing and disposing of the RTC Lithium battery CR2032 for safety consideration.

CAUTION:

There is danger of explosion, if battery is incorrectly replaced. Replace only with the same or equivalent type recommended by the manufacturer. Dispose of used batteries according to the manufacturer's instruction.

The specification is subject to change without notice.

Version Change History

Date	Version	Description	Remark
2015/3/13	V1.0	First release	Cosa
2015/4/20	V1.1	Modify Spec. of Touch	Cosa
2015/9/4	V1.2	Change Outline Drawing Modify Font Add Spec. of Shock/Vibration/Drop	Cosa
2016/3/8	V1.3	Add Panel Precautions	Cosa
2017/7/24	V1.4	a. Add Cautions with Continuous displaying fixed pattern b. Revise 15" LCD brightness c. Modify power input product Spec d. Revise accessory box including the following e. Add WEEE Information	Eddie

Table of Contents

How to Use This Manual.....	IX
System Overview.....	1
System View	6
I/O connectors	8
VESA mount installation.....	9
Panel mount installation	10
Unpacking.....	12
Getting Started.....	14
Setting up the System	14
Installing System Software	14
Installing the Drivers.....	15
BIOS Setup Information	19
Appendix	32
A. Jumper settings and Connectors	32
B. Wake UP on LAN Function	54

How to Use This Manual

This manual is written for the system integrator, PC technician and knowledgeable PC end user. It describes how to configure your WLP-7B20 Panel PC to meet various operating requirements. The user's manual is divided into three chapters, with each chapter addressing a basic concept and operation of the server board.

Chapter 1: System Overview - presents what you have inside the box and gives you an overview of the product specifications and basic system architecture for the WLP-7B20 Panel PC.

Chapter 2: System Installation - describes how to set up the system.

Chapter 3: BIOS Setup Information - specifies the meaning of each setup parameter, how to get advanced BIOS performance and update to a new BIOS. Additionally, the POST checkpoint list will give you a guide for troubleshooting.

The contents of this manual are subject to change without prior notice. These changes will be incorporated in new editions of this manual.

System Overview

System Specification

CPU	Intel® Celeron® J1900 2.0 GHz quad-core processor	
Chipset	Intel® HD Graphics	
Audio	Realtek ALC262 audio codec, 2+2 watts power amplifier	
LAN	Gigabit Ethernet x 2	
Memory	Dual Channel, two DDR3 SODIMM socket support up to 8GB DDR3L-1600	
I/O	EC	
Serial ATA	SATA II controller (3.0Gb/sec) Port x 2	
Serial port	External	RS232/RS422/RS485 x 1 (Set by BIOS, RS485 auto flow), RS232 x 1
	Internal	RS232 x 1 RS232 (Jumper 5V, 12V) x1
USB	External	USB 2.0 type a x 3, USB3.0 x 1
	Internal	Mini-PCIE x2 (Default) or USB 2.0 pin head x 2 (Option) Touch x 1 USB 2.0(Pin head) x 3
WDT	Generates system reset; 256 segments, 0, 1, 2...255 sec/min.	

BIOS

Brand: AMI

Flash ROM size: 64Mb

Support RTC wakeup /Wake on LAN /Power on after power failure/PnP/ACPI/RTC

Display

Panel

Size	10"	12"	15"
Brand	TIANMA	TIANMA	TIANMA
Model	TM104SCH02	TM121SDS01	TM150TDSG71
Resolution (pixel)	SVGA (800 x 600)	SVGA (800 x 600)	1,024 (H) × 768 (V)
Number of Colors	262K, LVDS 6 bits	16.2M	16.2 M
View Angle (H/V)	130/110	160/140	160/160
Brightness (cd/m ²)	230	450	450
Contrast Ratio	400:1	700:1	800 :1
Interface	LVDS 6 bits	LVDS	LVDS
Supply Voltage (V)	3.3	3.3	3.3
Backlight	CCFL	LED	LED
life time<Hrs>	20000	50000	50000
Operating temp.	-20~70°C	-20~70°C	-20~70°C

Continuous displaying fixed pattern may induce image sticking. It's recommended to use screen saver or moving content periodically if fixed pattern is displayed on the screen.

Cautions:

Continuous displaying fixed pattern may induce image sticking. It's recommended to use screen saver or moving content periodically if fixed pattern is displayed on the screen.

Touch Screen: resistive or capacitive types

	ELO	HIGGSTEC
Type	5 wire Full Flat Res. touch	Projective Capacitive
Glove	Any type glove	No
Input Mode	Point: Finger or touch pen Drag: Finger	Finger P-Cap touch pen
Vandal	NA	NA
Interface	USB	USB
Light Transmission	80±5%	90±3%
Hardness	4H	7H
Glass thickness	2.5 mm	3.45 mm
Linearity	$X \leq 1\%$, $Y \leq 1\%$	$X \leq 1.0\%$, $Y \leq 1.0\%$
Resolution	4096x4096	25ppi
Lifetime	36 million activations	100 million activations

Touch Controller

EETI EXC7700 microcontroller with USB interface and specific for 4, 5, 8 wire touch screen.

Storage

- HDD** 2.5" SATA HDD drive bay x 1 (with anti-vibration mechanism)
- SATA DOM** 2nd SATA connector pin7 with VCC_(+5V)

Expansion

- Mini-PCIE** 52 pin card-edge type compatible to PCI Express*Base specification 2.0 x 2

External I/O

- USB** USB 2.0 x 3, USB 3.0 x 1
(internal USB 2.0 x 5 → one for Res. Touch or PCT, two for Mini PCI-e or USB 2.0, Three for Free)
- COM** RS232/RS422/RS485 x 1 (Set by BIOS, RS485 auto flow), RS232 x 2
- LAN** RJ-45 x 2 (Gigabit Ethernet)
- Audio** 3.5mm phone jack connector * 2 (Line-out, and Mic-in)
- DVI output** DVI-I x 1

Power

Power	DC-In connector x 1 (Jack with locker)
Switch	Reset key
LED indicator on Aluminum bezel	Green: power On/Off Red: HDD status
Power Input	DC7V~32V
Power Adapter	AC 90 ~ 264V / 47 ~ 63 Hz / DC output 12V

Mechanical & Environmental

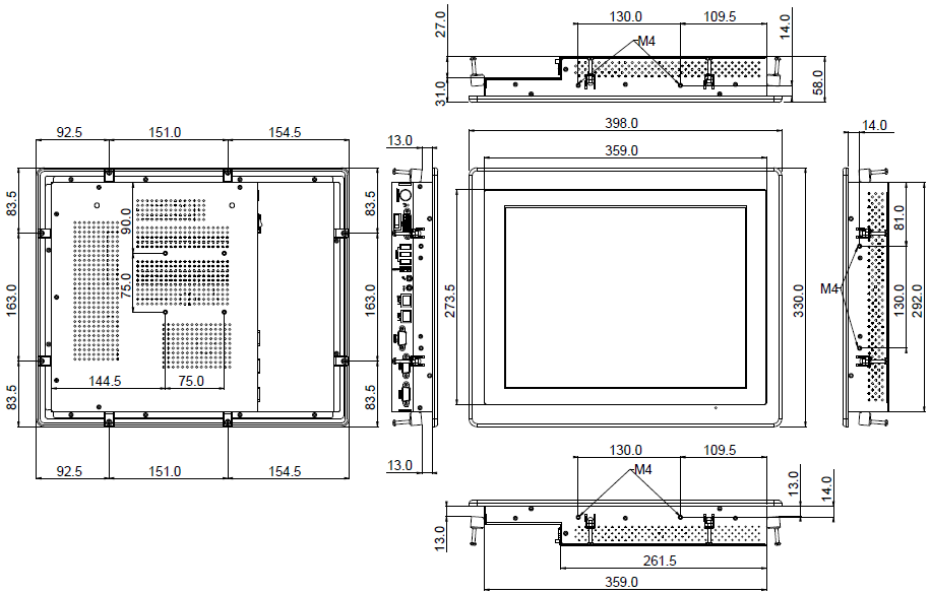
Material construction	Front bezel is Aluminum or SECC, others are SECC enclosure
Aluminum bezel Color	Black / Silver
Front Panel Protection	Res. Touch IP66 / P-CAP touch IP69K
ID design	Panel mount (default)
Operation Temperature	12V DC Input 0~50°C (IEC60068-2-56, air flow cooling) 12V DC Input 0~40°C (IEC60068-2-2, natural cooling) 32V DC Input 0~40°C (IEC60068-2-2, natural cooling)
Storage Temperature	-20~65°C
Operation Relative Humidity	10%~90%, non-condensing
Storage Relative Humidity	10%~90%, non-condensing
Mounting	Panel mount/VESA (75x75)

	Net Weight (Kg)	Gross Weight (Kg)
10"	3.5 Kg	5.5
12"	4.5	6.5
15"	5.5	8.5

Shock/Vibration/Drop

	<i>Shock</i>	<i>Vibration</i>	<i>Drop</i>
<i>General</i>	<i>Operating:</i> <i>Pulse shape :</i> <i>Half-sine waveform</i> <i>Impact</i> <i>acceleration : 15g</i> <i>Pulse duration : 11</i> <i>ms</i> <i>Number of shocks : 18 shocks (3 shock</i> <i>for each \pmaxis)</i> <i>Orientation : \pmX, \pmY</i> <i>and \pmZ axes</i>	<i>Operating:</i> <i>5 ~ 500Hz ,</i> <i>Acceleration : 1.0G</i> <i>Sweep time : 15</i> <i>minutes</i> <i>Number of cycle : 1</i> <i>cycle for each axis</i> <i>Vibration axes : X, Y</i> <i>and Z</i>	<i>3 Feet height free</i> <i>drop still survive,</i> <i>(test surface:</i> <i>concrete, with</i> <i>packing)</i> <i>6 surfaces</i>

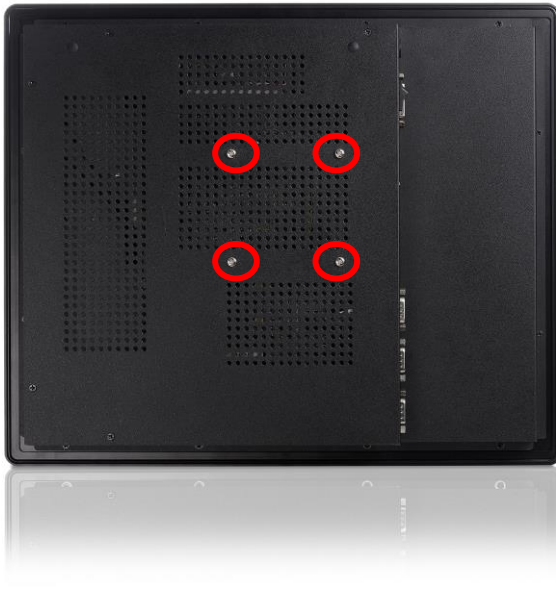
WLP-7B20-15 Outline Drawing (Panel Mount)



VESA mount installation

Please use the supplied 4 x M4-L10 screws for VESA mounting. And as below VESA mounting holder is just a diagrammatic drawing. You can choose any standard VESA 75x75 mm mounting holder to mount our machine.

For use only with UL listed Wall Mount Bracket with minimum weight/load bearing capacity 10 Kg

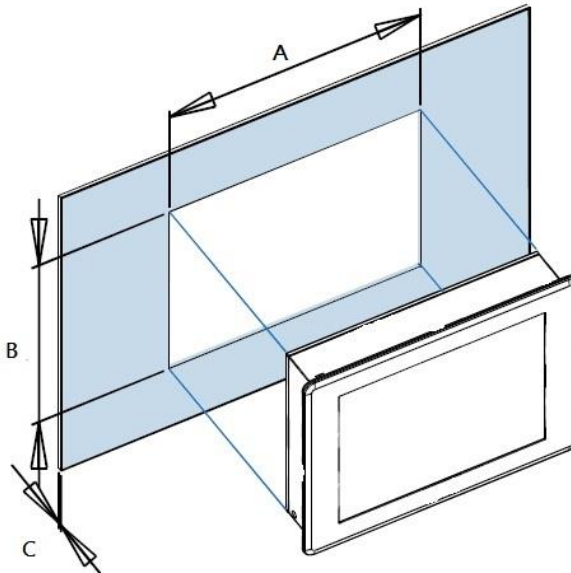


Panel mount installation

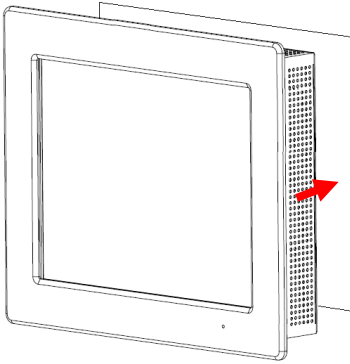
1. The Panel PC can be panel mounted and comes with brackets and screws for this purpose. The required cutout for panel mounting and maximum panel thickness is shown below.

	A	B	C
WLP-7B20-10	296	224	12
WLP-7B20-12	345	266	15
WLP-7B20-15	365	298	16

Unit: mm



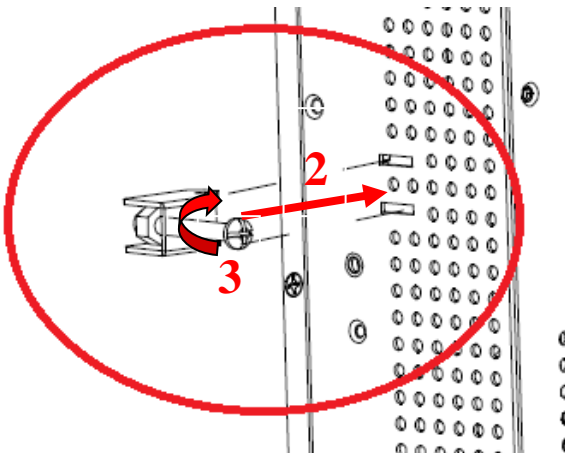
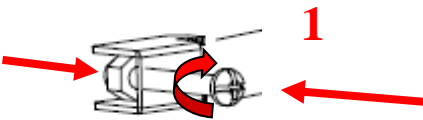
STEP 1



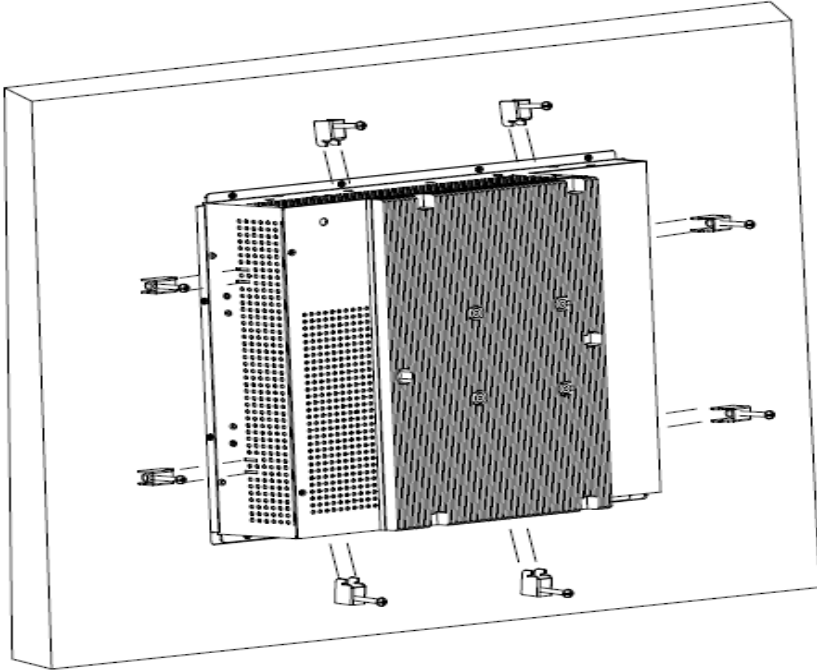
Panel Mount

Put Panel PC on the fixture (Wall, Panel....) from the front, with the sides of the front bezel shown on the outside.

STEP2



Use provided mounting kits to fix the Panel PC and the customer's fixture



Unpacking

After unpacking the shipping carton, you should find these standard items:

- The WLP-7B20 Panel PC series
- Accessory box including the followings:
 - AC-DC adapter x 1
 - AC power cord x 1
 - 10" & 12" - (BKT;WALL MOUNT STD,SUS304, 1.2mm) X 7

-
- 10" & 12" - SCREW BONNET; M4*6.5MM,MP-4(B) x 7
 - 10" & 12" - SCR; STEEL,M4*L=45MM FH MS x 7
 - 15" - BKT;WALL MOUNT STD,SUS304, 1.2mm X 8
 - 15" - SCREW BONNET; M4*6.5MM,MP-4(B) x 8
 - 15" - SCR; STEEL,M4*L=45MM FH MS x 8
 - DVD-ROM for drivers, utility, user manual(in PDF format)

Inspect all the items. If any item is damaged or missing, notify your dealer immediately.

Getting Started

This chapter tells you how to set up the system.

Setting up the System

The following is a summary of the steps in setting up the system for use.

CAUTION: Make sure that power to the system and each of the devices to be connected is switched OFF before plugging in the connectors.

1. Make any required external connections such as the keyboard, and mouse.
2. Plug the appropriate end of the power cord into the power connector of the system. Then plug the other end of the power cord to an electrical outlet.
3. Press the power switch of the system to turn on the system's power.
4. If necessary, run the BIOS SETUP program to configure the system (see Chapter 3).
5. Install the software drivers if necessary.

Installing System Software

Recent releases of operating systems from major vendors include setup programs, which load automatically and guide you through hard disk preparation and operating system installation. The guidelines below will help you determine the steps necessary to install your operating system on the Panel PC hard drive.

NOTE: Some distributors and system integrators may have already pre-installed system software prior to shipment of

your Panel PC.

Installing software requires an installed HDD. Software can be loaded in the WLP-7B20 Panel PC using any of below methods:

Method 1: Use the Ethernet

You can use the Ethernet port to download software from the net to the HDD that has been pre-installed in WLP-7B20 Panel PC

Method 2: Use the COM Port

By connecting another PC to the WLP-7B20 Panel PC with an appropriate cable, you can use transmission software to transmit Operation System Software to the HDD that has been pre-installed in the WLP-7B20 Panel PC.

Method 3: Use a External CD-ROM

In order to boot up system from USB-CD/DVD drive, please connect USB-CD/DVD drive, turn on computer power, keep on pressing "F11" key, go into BIOS quick boot menu, select "USB-CD ROM", WAIT FOR 20 SECONDS, then press enter, system OS will boot up from USB-CD/DVD drive directly

Then you can use the external CD-ROM to transmit the software to the HDD that has been pre-installed in the WLP-7B20 Panel PC

Installing the Drivers

After installing your system software, you will be able to set up the LAN, VGA, Audio and USB functions. All drivers are stored in a CD disc, which can be found in your accessory pack.

The various drivers and utilities in the disc have their own text files that help users install the drivers and understand their functions.

Follow the sequence below to install the drivers:

Step 1 – Install Intel® INF Driver

Step 2 – Install Intel® VGA Driver

Step 3 – Install Intel® LAN Driver

Step 4 – Install Audio Driver

Step 5 – Install Touch Driver

Step 1 – Install Intel® INF Driver

1. Open file of **chipset**
2. Click on the **setup.exe**
3. Follow the instructions that the window shows
4. The system will help you install the driver automatically
5. Reboot system

Step 2 –Install Intel® VGA Driver

1. Open file of **VGA**
2. Select the OS folder your system is
3. Click on the **.exe** file located in the OS folder
4. Follow the instructions that the window shows
5. The system will help you install the driver automatically
6. Reboot system

Step 3 – Install Intel® LAN Driver

1. Open file of **LAN**
2. Click on the **setup.exe**
3. Follow the instructions that the window shows
4. The system will help you install the driver automatically
5. Reboot system

Step 4 – Install Audio Driver

1. Open file of **LAN**
2. Click on the **setup.exe**
3. Follow the instructions that the window shows
4. The system will help you install the driver automatically
5. Reboot system

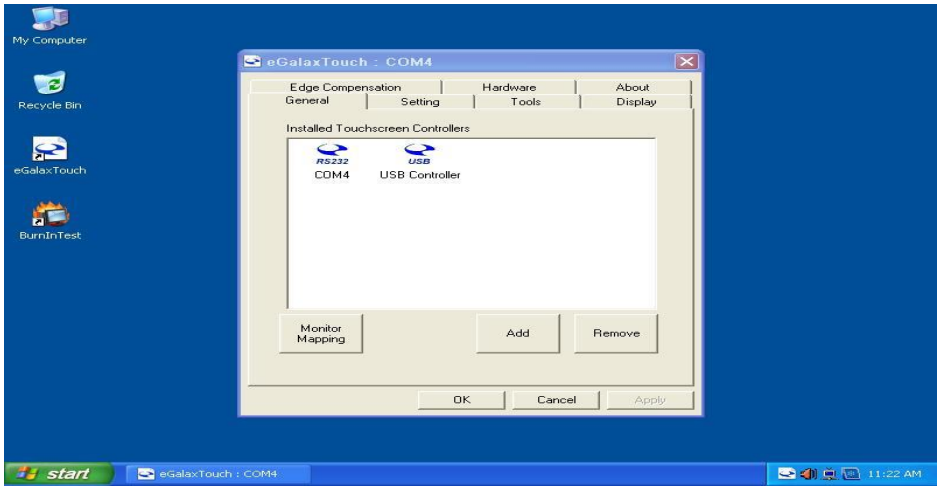
Step 5 – Install Touch Driver

1. Open file of **touch**
2. Click on the **setup.exe**
3. Follow the instructions that the window shows
4. The system will help you install the driver automatically
5. Reboot system

Note:

eGalax Touch driver supports both resistive and capacitive touch screens, user can find 2 touch icons shown in utility, please set up touch screen by selecting the correlative one.

(USB controller: resistive touch screen, USB controller: capacitive touch screen)



BIOS Setup Information

BIOS Introduction

The AMI BIOS (Basic Input / Output System) installed in your computer system's ROM supports Intel processors. The BIOS provides critical low-level support for a standard device such as disk drives, serial ports and parallel ports. It also adds virus and password protection as well as special support for detailed fine-tuning of the chipset controlling the entire system.

BIOS Setup

The AMI BIOS provides a Setup utility program for specifying the system configurations and settings. The BIOS ROM of the system stores the Setup utility. When you turn on the computer, the AMI BIOS is immediately activated. Pressing the key immediately allows you to enter the Setup utility. If you are a little bit late pressing the key, POST (Power On Self Test) will continue with its test routines, thus preventing you from invoking the Setup. If you still wish to enter Setup, restart the system by pressing the "Reset" button or simultaneously pressing the <Ctrl>, <Alt> and <Delete> keys. You can also restart by turning the system Off and back On again. The following message will appear on the screen:

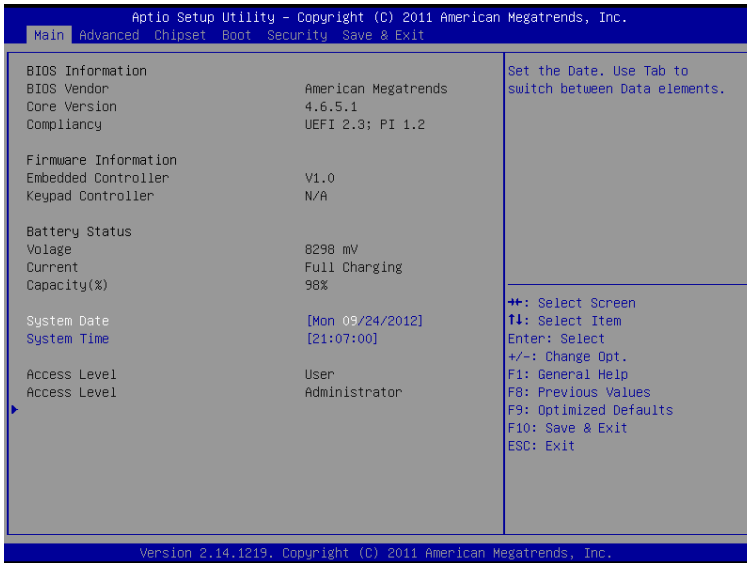
Press to Enter Setup

In general, you press the arrow keys to highlight items, <Enter> to select, the <PgUp> and <PgDn> keys to change entries, <F1> for help and <Esc> to quit.

When you enter the Setup utility, the Main Menu screen will appear on the screen. The Main Menu allows you to select from various

setup functions and exit choices.

Main



This section provides information on the BIOS information, Memory information, and Battery information

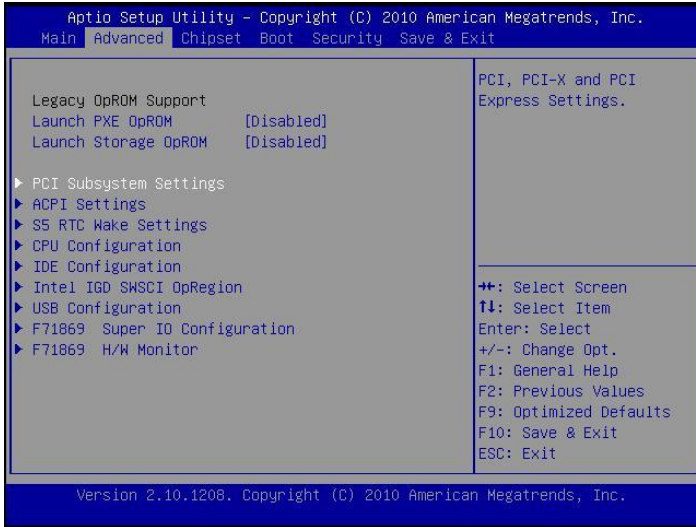
System Date

Set the system date. Use the <Tab> key to switch between data elements.

System Time

Set the system time. Use the <Tab> key to switch between time elements.

Advanced



Launch OpROM Support

Launch PXE OpROM

Enables or disables Boot Option for Legacy Network Devices.

Launch Storage OpROM

Enables or disables Boot Option for Legacy Mass Storage Devices with Option ROM.

PCI Subsystem Settings

PCI ROM Priority

In Case of multiple Option ROMs (Legacy and EFI Compatible), specifies what PCI Option ROM to launch.

PCI Latency Timer

Value to be programmed into PCI Latency Timer Register.

VGA Palette Snoop

Enables or disables VGA Palette Registers Snooping.

PERR# Generation

Enables or Disables PCI Device to Generate PERR#.

SERR# Generation

Enables or Disables PCI Device to Generate SERR#.

Relaxed Ordering

Enables or Disables PCI Express Device Relaxed Ordering.

Extended Tag

If ENABLED allows Device to use 8-bit Tag field as a requester.

No Snoop

Enables or Disables PCI Express Device No Snoop option.

Maximum Payload

Set Maximum Payload of PCI Express Device or allow System BIOS to select the value

Maximum Read Request

Set Maximum Read Request Size of PCI Express Device or allow System BIOS to select the value.

ASPM Support

Set the ASPM Level: Force L0 – Force all links to L0 State :
AUTO – BIOS auto configure : DISABLE – Disables ASPM.

Extended Synch

If ENABLED allows generation of Extended Synchronization patterns.

ACPI Settings

Enables ACPI Auto Conf

Enables or Disables BIOS ACPI Auto Configuration.

Enable Hibernation

Enables or Disables System ability to Hibernate (OS/S4 Sleep

State). This option may be not effective with some OS.

ACPI Sleep State

Select the highest ACPI sleep state the system will enter, when the SUSPEND button is pressed.

S5 RTC Wake Settings

Wake System with Fixed Time

Enables or disables system wake on alarm event. When enabled, the system will wake on the time specified.

Wake system with Dynamic Time

Enables or disables system wake on alarm event. When enabled, the system will wake on the current time+Increase minute(s).

CPU Configuration

Hyper-Threading

Enabled for Windows XP and Linux (OS optimized for Hyper-Threading Technology) and Disabled for other OS (OS optimized for Hyper-Threading Technology)

Core-Multi Processing

Enable or Disable Core-Multi Processing mode.

Execute Disable Bit

XD can prevent certain classes of malicious buffer overflow attacks when combined with a supporting OS (Windows Server 2003 SP1, Windows XP SP2, SuSE Linux 9.2, RedHat Enterprise 3 Update 3.)

Limit CPUID Maximum

Disabled for Windows XP.

IDE Configuration

ATA or IDE Configuration

Select ATA or IDE configuration.

Configure SATA AS

Select a configuration for SATA controller.

HDD Acoustic Power Ma

Option to enable or disable HDD Acoustic Power Management.

DiPM

Option to enable or disable DiPM

Intel IGD SWSCI OpRegion

DVMT Mode Select

Selects DVMT Mode used by Internal Graphics Device.

DVMT/FIXED Memory

Selects DVMT/FIXED Mode Memory size used by Internal Graphics Device.

IGD – Boot Type

Select the Video Device which will be activated during POST.
This has no effect if external graphics present.

LCD Panel Type

Select LCD panel used by Internal Graphics Device by selecting the appropriate setup item.

Panel Scaling

Select the LCD panel scaling option used by the Internal Graphics Device.

GMCH BLC Control

Back Light Control Setting

BIA Control

Spread Spectrum clock

- >>Hardware: Spread is controlled by chip;
- >>Software: Spread is controlled by BIOS.

TV1 Standard

TV2 Standard

Active LFP

Select the Active LFP Configuration.

No LVDS:VBIOS does not enable LVDS.

INT-LVDS:VBIOS enables LVDS driver by Integrated encoder.

SDV0 LVDS:VBIOS enables LVDS driver by SDV0.

USB Configuration

Legacy USB Support

Allows USB devices to be used in MS-DOS.

EHCI Hand-off

This is a workaround for OSes without EHCI hand-off support.

The EHCI ownership change should be claimed by EHCI driver.

USB transfer time-out

The time-out value for Control, Bulk, and Interrupt transfers.

Device reset time-out

USB mass storage device Start Unit command time-out.

Device power-up delay

Maximum time the device will take before it properly reports itself to the HOST Controller.

'Auto' uses default value: for a Root port it is 100 ms, for a Hub port the delay is taken from Hub descriptor.

F71869 Super IO Configuration

Serial Port 0 Configuration

Set Parameters of Serial Port 0 (COM A).

Serial Port 1 Configuration

Set Parameters of Serial Port 1 (COM B).

F71869 H/W Monitor

Monitor hardware status

Second Super IO Configuration

Serial Port 1 Configuration

Set Parameters of Serial Port 1 (COM C).

Serial Port 2 Configuration

Set Parameters of Serial Port 2 (COM D).

Serial Port 3 Configuration

Set Parameters of Serial Port 3 (COM E).

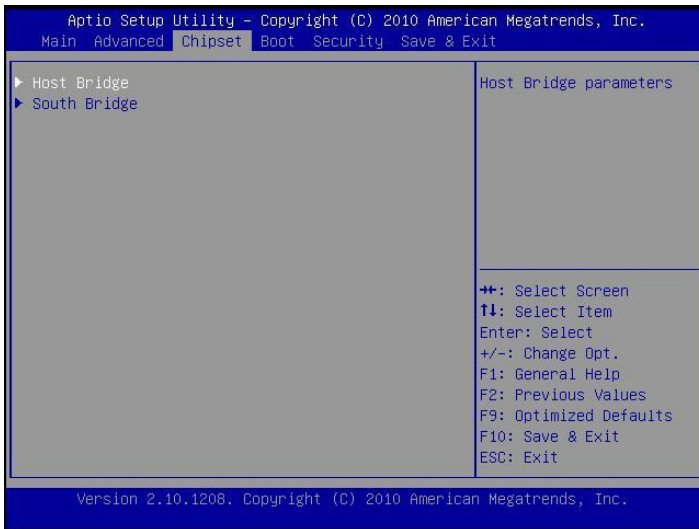
Serial Port 4 Configuration

Set Parameters of Serial Port 4 (COM F).

Serial Port Console Redirection

Serial Port Console Redirection.

Chipset

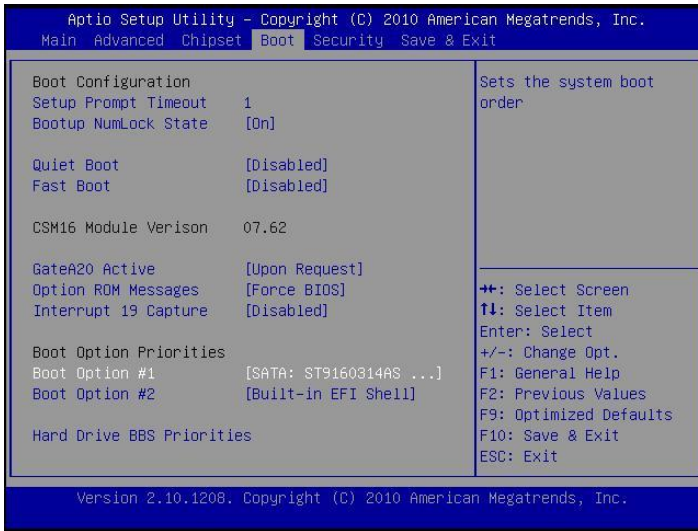


Host Bridge/South Bridge

This screen provides information on Host Bridge/South Bridge

parameters.

Boot



Setup Prompt Timeout

Number of seconds to wait for setup activation key.

65535(0xFFFF) means indefinite waiting.

Bootup Numlock State

Selects the keyboard NumLock state.

Quiet Boot

Allows you to determine whether to display the AMI Logo at system startup. **Disabled** displays normal POST message.

Fast Boot

Enables or disables the quick boot function to speed up the system boot-up process to shorten the waiting time for entering the operating system and to deliver greater efficiency for daily use.

GateA20 Active

This option is useful when any RT code is executed above 1MB. Upon Request GA20 can be disabled using BIOS services. (Default)

Always Do not allow disabling GA20.

Option ROM Messages

Sets display made for option ROM.

Interrupt 19 Capture

Enables or disables Option ROMs to Trap Int 19.

Boot Option Priorities

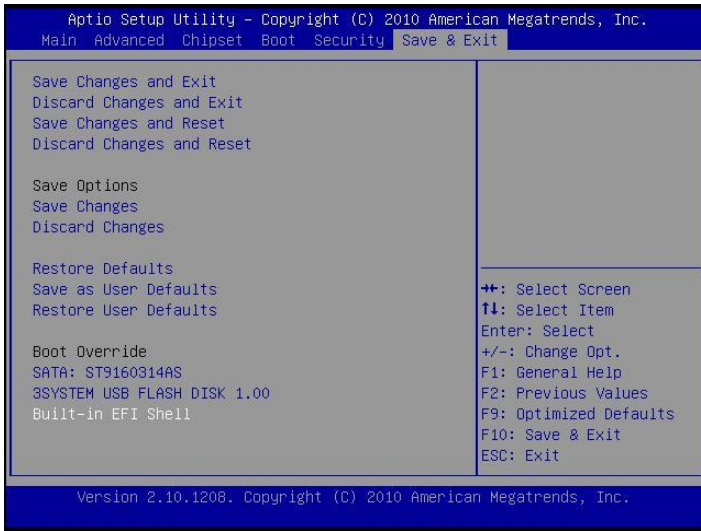
Specifies the sequence of loading the operating system from the installed hard drives.

Security



Enables or disables the security chip. It is recommended that you use this function with the Administrator/User password.

Save & Exit



Save Changes and Exit

Exit system setup after saving the changes.

Discard Changes and Exit

Exit system setup without saving any changes.

Save Changes and Reset

Reset the system after saving the changes.

Discard Changes and Reset

Reset system setup without saving the changes.

Save Changes

Save the changes done so far to any of setup options.

Discard Changes

Discard the changes done so far to any of setup options.

Restore Defaults

Restore/load default values for all the setup options.

Save as User Defaults

Save the changes done so far as User Defaults.

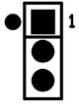
Restore User Defaults

Restore the User Defaults to all the setup options.

EFIGUI_FLASH

Press <Enter> to execute the simple EFI GUI Flash Program.

JP5 – Backlight Type Selection



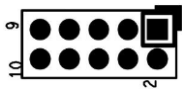
Description	Jumper Setting
Analog Inverter	1-2 (for 10")
PWM Inverter	2-3 (for 12"/15")

JP6 – Backlight control level Selection



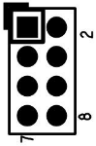
Description	Jumper Setting
+3.3V	1-2
+5V	OPEN (default)

JP7 – Touch Panel Type Selection



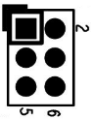
Description	Jumper Setting
3M type	1-2, 3-4 (default)
ELO type	5-6,7-8

JP8 – LVDS Power Selection



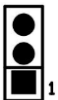
Description	Jumper Setting
+3.3VS(for 10"/12"/15")	5-6, 7-8 (default)
+5VS(for 17"/19")	1-2, 3-4

JP9 – Sensor Selection



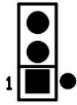
Description	Jumper Setting
No Panel Sensor	1-2(default)
No MB Sensor	3-4
Reserved	5-6

JP10 – CMOS Clear



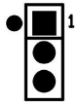
Description	Jumper Setting
Normal Open	1-2 (default)
CMOS Clear	2-3

JP11 – SATA / SATADOM Selection



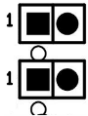
Description	Jumper Setting
SATA	2-3(default)
SATA DOM	1-2

JP12 – COM3 Power Selection



Description	Jumper Setting
+5VS	2-3(default)
+12VS	1-2

JP13,J14 –Y cable* Support both DVI+VGA



Description	JP13	JP14
No support (default)	Open	Open
Support	1-2	1-2

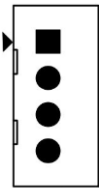
*Support Wincomm Y cable only.

JP15 –Panel Resolution Selection

JP15 jumper setting				Panel Resolution	Color Depth
1-2	3-4	5-6	7-8		
0	0	0	0	800x600	6bit
0	0	0	1	1024x768	6bit
0	0	1	0	1024x768	8bit
0	0	1	1	1280x768	6bit
0	1	0	0	1280x800	6bit
0	1	0	1	1280x960	6bit
0	1	1	0	1280x1024	8bit
0	1	1	1	1366x768	6bit
1	0	0	0	1366x768	8bit
1	0	0	1	1440x900	8bit
1	0	1	0	1440x1050	8bit
1	0	1	1	1600x900	8bit
1	1	0	0	1680x1050	8bit
1	1	0	1	1600x1200	8bit
1	1	1	0	1920x1080	8bit
1	1	1	1	1920x1200	8bit

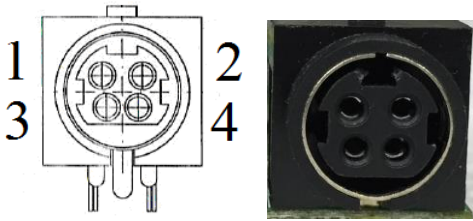
Connector Definition

PJ5 /PJ6 – HDD Power Connector



Pin #	Signal Description
1	+12VS
2	GND
3	GND
4	+5VS

PJ8 – Power Jack



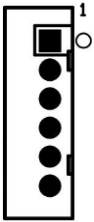
Pin #	Signal Description
1	DC In
2	DC In
3	GND
4	GND

PJ9 – Power Input Connector



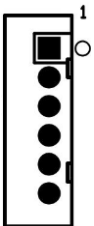
Pin #	Signal Description
1	GND
2	GND
3	DC In
4	DC In

J5 – LCD Inverter Wafer Header



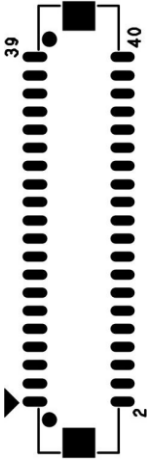
Pin #	Signal Description
1	+12VS
2	+12VS
3	Backlight Control
4	Backlight Enable
5	GND
6	GND

J6, J54, J56 – Internal USB 2.0 Pin Header



Pin #	Signal Description
1	+5VSB
2	+5VSB
3	Data -
4	Data +
5	GND
6	GND

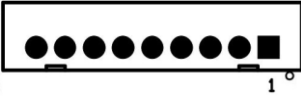
J9 – LVDS Interface



Pin #	Signal Description	Pin #	Signal Description
39	GND	40	GND
37	Ground	38	GND
35	A_TXD3+	36	B_TXD3+
33	A_TXD3-	34	B_TXD3-
31	GND	32	GND
29	A_CLK+	30	B_CLK+
27	A_CLK-	28	B_CLK-
25	GND	26	GND
23	A_TXD2+	24	B_TXD2+
21	A_TXD2-	22	B_TXD2-
19	GND	20	GND
17	A_TXD1+	18	B_TXD1+
15	A_TXD1-	16	B_TXD1-
13	GND	14	GND
11	A_TXD0+	12	B_TXD0+
9	A_TXD0-	10	B_TXD0-
7	GND	8	GND
5	GND	6	GND
3	+LVDS PWR	4	+LVDS PWR

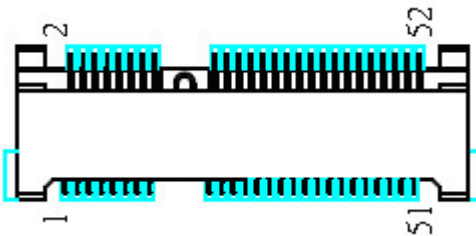
1	+LVDS PWR	2	+LVDS PWR
---	-----------	---	-----------

J10 – Resistance Touch Screen Interface

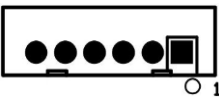


Pin #	Signal Description		
	8-wire	4-wire	5-wire
1	UL(X+)	UL(X+)	UL(X+)
2	UR(Y+)	UR(Y+)	UR(Y+)
3	N/A	N/A	PROBE
4	LR(X-)	LR(X-)	LR(X-)
5	LL(Y-)	LL(Y-)	LL(Y-)
6	X+_DRIVE	N/A	N/A
7	Y+_DRIVE	N/A	N/A
8	X-_DRIVE	N/A	N/A
9	Y-_DRIVE	N/A	N/A

J13 / J19 – Mini PCI Express Socket



J14 –P-CAP Touch screen interface*

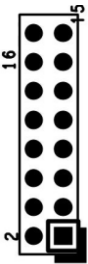


Pin #	Signal Description
-------	--------------------

1	+5VSB
2	+5VSB
3	Data -
4	Data +
5	Ground
6	Ground

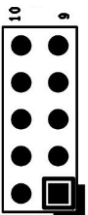
* Res(J10) with P-CAP(J14) select one

J15 –TPM / ID-394



Pin #	Signal Description	Pin #	Signal Description
16	+3.3VSB	15	SUS_STAT#
14	SMB DATA	13	GND
12	SMB CLK	11	Debug CLK
10	CLKRUN#	9	LPC Frame#
8	+5VSB	7	LPC AD3
6	+3.3VS	5	LPC AD2
4	SERIRQ	3	LPC AD1
2	PLT reset#	1	LPC AD0

J16 – For JTAG



Pin #	Signal Description	Pin #	Signal Description
10	Reserved	9	GND
8	Reserved	7	+3.3V
6	Reserved	5	+3.3V
4	C2D	3	GND
2	GND	1	+3.3V

J17 – Panel Temp Sensor Connector

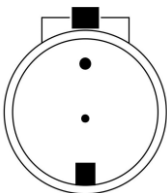


Pin #	Signal Description
1	PANEL_SENSOR
2	GND

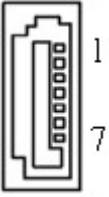
J21 – BIOS Socket



J22 – Battery Socket

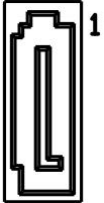


J24 – Standard SATA / SATA DOM Interface



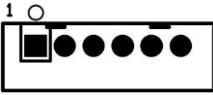
Pin #	Signal Description
1	Ground
2	Tx+
3	Tx-
4	Ground
5	Rx-
6	Rx+
7	Ground / +5VS

J25 – Standard SATA Interface



Pin #	Signal Description
1	Ground
2	Tx+
3	Tx-
4	Ground
5	Rx-
6	Rx+
7	Ground

J26 – PS2 KB/MS



Pin #	Signal Description
1	KBDATA
2	MSDATA
3	Ground
4	+5VSB
5	KBCLK
6	MSCLK

J27 – MB Heater Connector



Pin #	Signal Description
2	GND
1	+12VSB

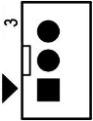
J28 – Power / HDD LED



Pin #	Signal Description
4	PWR_LED#
3	+3.3VSB

2	+3.3VSB
1	SATA_LED#

J29 – Heater Error / Heating LEDs



Pin #	Signal Description
3	+3.3V
2	HEATER_LED#
1	ERROR_LED#

J30, J31, J32, J33 – Panel Heater Connector



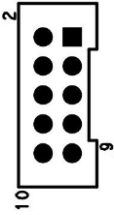
Pin #	Signal Description
1	+12VSB
2	GND

J34, J38 – RIGHT / LEFT CH for Speaker.



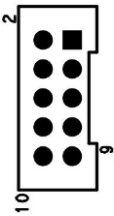
Pin #	Signal Description	
	J34 (RIGHT CH)	J38 (LEFT CH)
1	ROUT+	LOUT+
2	ROUT-	LOUT-

J35 – Internal COM4 Serial Port



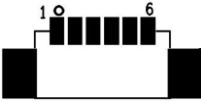
Pin #	Signal Description	Pin #	Signal Description
2	232_DSR#	1	232_DCD#
4	232_RTS#	3	232_SIN
6	232_CTS#	5	232_SOUT
8	232_RI#	7	232_DTR#
10	+5VS	9	GND

J36 – Internal COM3 Serial Port



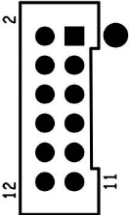
Pin #	Signal Description	Pin #	Signal Description
2	232_DSR#	1	232_DCD#
4	232_RTS#	3	232_SIN
6	232_CTS#	5	232_SOUT
8	232_RI#	7	232_DTR#
10	+5VS/+12VS	9	GND

J37 – Light Sensor Connect



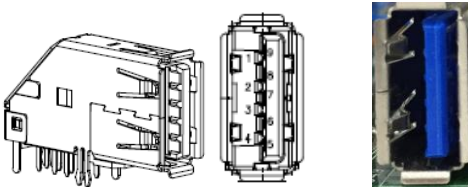
Pin #	Signal Description
1	+3.3V
2	NC
3	Ground
4	SCL1
5	NC
6	SDA1

J39 – GPIO Connect

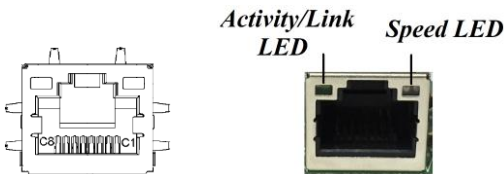


Pin #	Signal Description	Pin #	Signal Description
2	GEN_GPI1	1	GEN_GPO1
4	GEN_GPI2	3	GEN_GPO2
6	GEN_GPI3	5	GEN_GPO3
8	GEN_GPI4	7	GEN_GPO4
10	+5V	9	+5V
12	GND	11	GND

J40 – External USB 3.0 Port



J41 / J42 –External RJ45 Ethernet Port



Activity/Link LED

Status	Description
OFF	No Link
Blinking	Data Activity
ON	Link

Speed LED

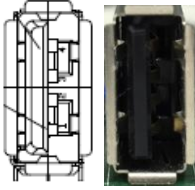
Status	Description
OFF	10 Mbps
Green	100 Mbps
Orange	1 Gbps

J43 – Power Switch connect



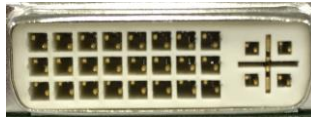
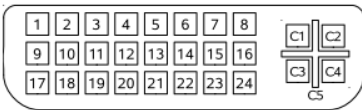
Pin #	Signal Description
1	Power ON
2	GND

J44,J45,J46 – External USB 2.0 Port



Pin #	Signal Description
1	+5V
2	USB_D-
3	USB_D+
4	GND

J47 – External DVI-I Connector



J48 / J49 – External Audio Phone Jack



Audio Jack	Signal Description
J48	Line Out (stereo) Green

J49	Microphone (stereo) Pink
-----	-----------------------------

J50 – Reset Button



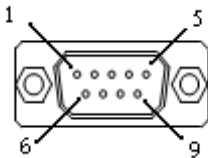
Pin #	Signal Description
1	SYS_RESET#
2	GND
3	GND
4	GND

J51 – Reset connector



Pin #	Signal Description
1	SYS_RESET#
2	GND

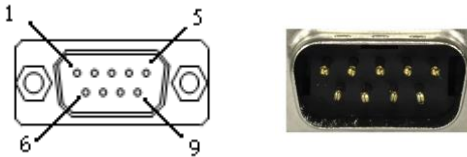
J52 – External COM1 Connector



Pin #	Signal Description
-------	--------------------

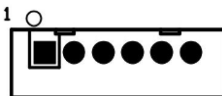
	RS-232	RS-422	RS-485
1	DCD	TX D-	DATA-
2	RXD	TX D+	DATA+
3	TXD	RX D+	--
4	DTR	RX D-	--
5	GND	--	--
6	DSR	--	--
7	RTS	--	--
8	CTS	--	--
9	RI#	--	--

J53 – External COM2 Connector



Pin #	Signal Description	Pin #	Signal Description
1	DCD	2	RXD
3	TXD	4	DTR
5	GND	6	DSR
7	RTS	8	CTS
9	RI#	10	--

J54/J55*/J56/J57* – Internal USB 2.0 Pin Header

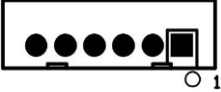


Pin #	Signal Description
1	+5VSB
2	+5VSB
3	Data -

4	Data +
5	GND
6	GND

*J55/J57 reserve for Mini PCIE x1 share.

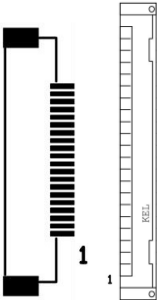
J60/J61/J62 – Internal USB 2.0 Pin Header



Pin #	Signal Description
1	+5VSB
2	+5VSB
3	Data -
4	Data +
5	GND
6	GND

*Co-lay with external USB port (J44, J45 and J46).

J58 – External PoE Slot (Option)



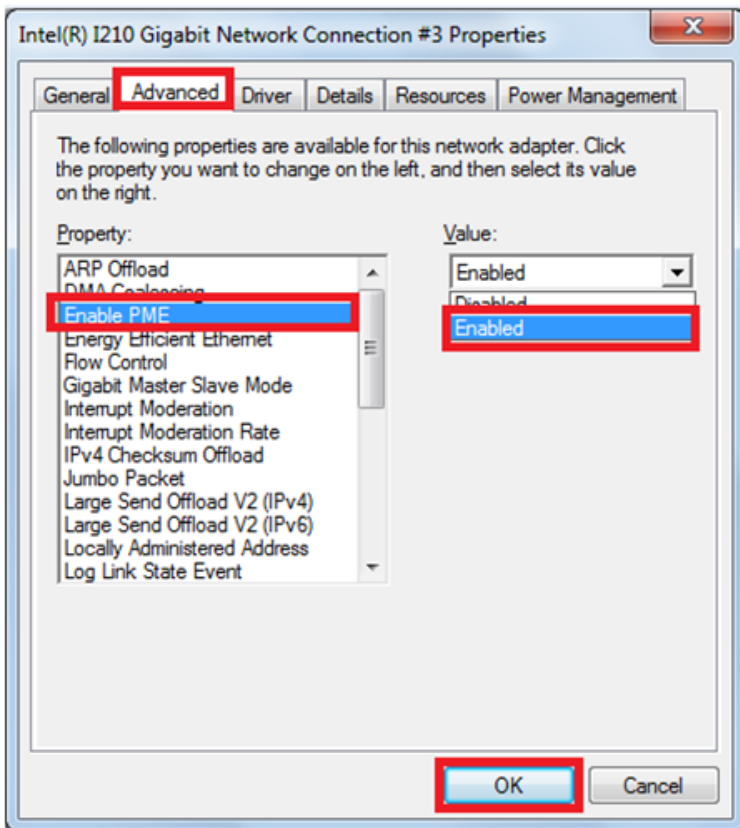
Pin #	Signal Description
1	LAN0_MDIO_P
2	LAN0_MDIO_N
3	GND
4	GND

5	LAN0_MDI1_P
6	LAN0_MDI1_N
7	GND
8	GND
9	GND
10	GND
11	GND
12	GND
13	GND
14	GND
15	LAN0_MDI2_P
16	LAN0_MDI2_N
17	GND
18	GND
19	LAN0_MDI3_P
20	LAN0_MDI3_N

B. Wake UP on LAN Function

Please make sure the AC power is ON before use the function.

1. Boot into OS (windows 7).
2. In start menu control panel System device manager Network adapters Intel i210 double click Advanced→Enable PME.



Please shutdown system and wait for wake on LAN after finish these procedures.