

Minimally Invasive Surgery – Endoscopy Solutions



Background

Endoscopy Market size was valued at around USD 33,480 million in 2021 and is estimated to witness a CAGR of 7% from 2022 to 2030 due to rise in geriatric population, availability of innovative endoscopy devices for endoscopy in developed regions such as Europe and North America, rising incidences of gastrointestinal disorders, cancer and other chronic conditions in Asia Pacific and increasing demand for minimally invasive procedures, according to a new research report by Global Market Insights Inc. Under this market trend, the medical imaging process stability is key design to connect these endoscopy devices, furthermore, it would require more graphic computing capability while entering higher resolution requirement in the near future.

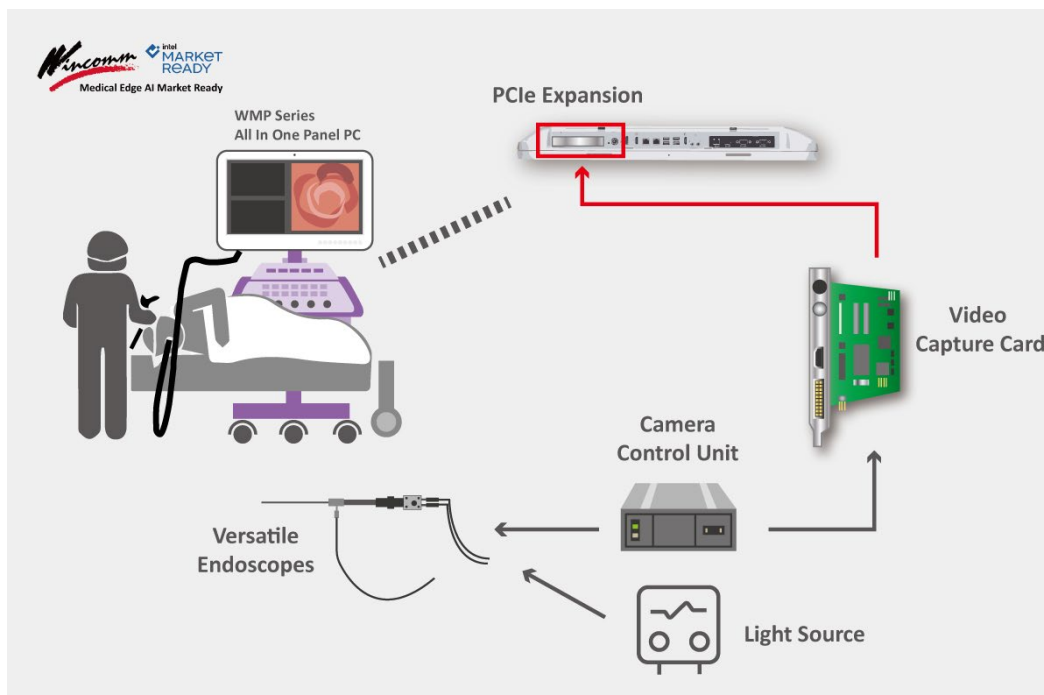
Pain Points

To suit for various camera input with the light source module, the design for the computing platform must maintain several points, such as

- Must be Medical Grade passed certification locally
- Must support SDI/HDMI or USB connector to fulfill various type of endoscope
- Video Capture Card support

- Easy clean & anti-bacterial housing
- Touch on/off for hygienic cleaning
- Isolation COM / LAN / USB
- UPS Battery Inside
- Easy integration across different endoscopy devices

Wincomm Solutions



Featuring on High CPU performance, PCI-E[x16] expansion, Battery pack, lasting up to 50 minutes, and Medical MDR/UL/EN 60601-1 4th Edition Certified

Wincomm medical grade touch panel PC, WMP POC, OR and Powerful Imaging series, are designed for endoscopy system and have successfully installed in the hospitals around EU, US and Asia. For instance, the WMP-24C/24MD meets the embedded endoscopic system specifications with its high performance CPU, graphics capabilities, PCI-E[x16] expansion for video capture card. In addition, it has USB3.1 gen 2 slots, which transfer speed is up to 10Gbps, to conveniently connect other medical devices. The P-cap touch design allows users to easily operate the unit and clean under frozen the touch by hot key. With the UPS battery inside, it could secure the surgery process and even provide the power supply inside model, WMP-24M-PIS to fulfill the operating room condition. For some cases, it would require the higher graphic capability for AI solution, so it provides WMP-19K/24K series with graphic card embedded to support. Besides, the new medical box PC, WPC-767(F) series are equipped with dual PCIe slots to support on this requirement.

For more product information, please visit the Wincomm website at

<https://www.wincommusa.com/category-Medical-Panel-PC-p1-1.html>