

WMP-27T-PIS

Professional Surgical All-In-One PC

Advanced OR Display Solution

WMP-27T-PIS excels with 4K clarity, integrated power, isolated I/O, and multi-screen support, revolutionizing OR safety and efficiency.

Key Features

- ✓ 4K/FHD 27-inch screen with DICOM support, 3 color temps, brightness lock.
- ✓ Stable-power supply with built-in power supply unit or uninterruptible battery.
- ✓ Powerful computing with Intel® 13th Gen. Core i7 processor with Iris® Xe graphics for high performance image processing.
- ✓ Antibacterial enclosure design up to 95% effectiveness, including touch, panel, aluminum casting housing.
- ✓ Design for operating room to fulfill multi-screen support, noise-free, high voltage insulation, easy for expansion customization but energy saving.

Key Benefits



Enhanced Surgical Safety

Ensures stable power and antibacterial design, reducing surgical risks and contamination.



Optimized Imaging Clarity

4K display delivers fatigue-reducing, clear visuals for precise medical imaging and interpretation.



Quiet, Efficient Operation

Fanless, noise-free design and easy-clean features enhance OR efficiency and focus.



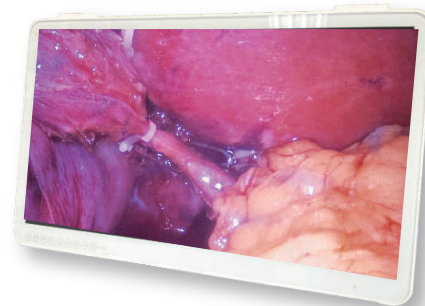
WMP-27T-PIS





WMP-27T-PIS

Specification



Model	WMP-27T-PIS IP0A (STD)	WMP-27T-PIS IP0B (ISO)
CPU / Chipset	FCBGA1744 13 th generation Intel® Core i7/i5/i3 and Celeron processor (35W max.)/Soc	
Graphic	Intel® Iris Xe Graphics (i7/i5 CPU) / Intel® UHD Graphics (i3 CPU)	
RAM	Two 4800 MHz DDR5 SODIMM socket support dual Channel, non-ECC, up to 64GB	
OS Support	Optional Win 10 IoT Enterprise LTSC 64 bit, Windows 11 IoT Enterprise LTSC 64 bit	
Storage	1 x M.2 (M Key, 2280) with PCIe x4 for SSD, 1 x 2.5" SATA3 HDD/SSD drive bay	
Expansion	1 x PCIe x8 expansion slot (PCI-E x4 Signal 20W Max.), 1x M.2 E key 2230	
Display Size	27" 16:9	
Display (AHVA)	3840 x 2160 (4K2K), 1.07B colors (8 bit + Hi-FRC), 178(H) / 178(V), 500 nits (Typ. Center point), CR:1000: 1 (Typ)	
Touch Screen	Full flat projective capacitive touch panel / Light Transmission: ≥ 84% / Hardness: ≥ 7H pencil, pressure 765g/45° / Life: 100M time	
USB	4 x USB 3.2 gen 2	4 x USB 3.2 gen 2
COM	1 x RS232, 1 x RS232/RS422/RS485	1 x ISO RS232/RS422/RS485
LAN	1 x RJ45 1Gbps Intel® I219LM (AMT/Vpro) 1 x RJ45 2.5Gbps Intel® I226V	1 x RJ45 1Gbps Intel® I219LM (AMT/Vpro) 1 x RJ45 2.5Gbps Intel® I226V, 1 x ISO RJ45 1Gbps
Audio	3.5mm phone jack connector * 2 (Line-out, Mic-In), Waterproof 2 X 2W speaker	
Video output	1 x DP, 1 x HDMI	
Control Hot Key (L to R)	Battery LED Indicator; Power; Volume +/-; Brightness +/-; Wifi On/Off, LCD On/Off; Clean Me; Programmable Function	
Cooling	Fanless	
Power Adapter	AC input 100 ~240V / 47 ~ 63 Hz / DC output 24V 250W	
Temperature	Operating Temperature: 0~35°C (IEC60068-2-78) / Storage Temperature: -20~60°C	
Humidity	Operating & Storage: 10 ~ 90%, non-condensing	
IP Rating	Front: IP65, Rear: IP54 with Optional Cable Cover	
Housing	Rear: Aluminum Alloy Body / White (Touch), Anti-bacteria Housing	
Dimensions (Net)	657.8 mm (H) x 413.6 mm (V) x 68 mm (T)	
Weights (Net)	11.7 kg	
Mounting	VESA 100 x 100	
Certification (By Project)	CE EN 60601-1-2 :2015 ver. 4.1 (By project) EN 60601-1: 2006/A2: 2021; IEC 60601-1:2005, IEC 60601-1:2005/AMD1:2012, IEC 60601-1:2005/AMD2:2020 (By project) UL: AAMI ES60601-1:2005/(R)2012 and A1:2012/(R)2012 and A2:2021) (V3.2) (By project) cUL CAN/CSA-C22.2 No. 60601-1:14 (By project) FCC: Part 18 Class B (By project) VCCI: 2016-11, Class B (By project) ISO 14971 / IEC62133 (By project)	