



Explosion Proof | www.wincomm.com.tw



WTPE Series

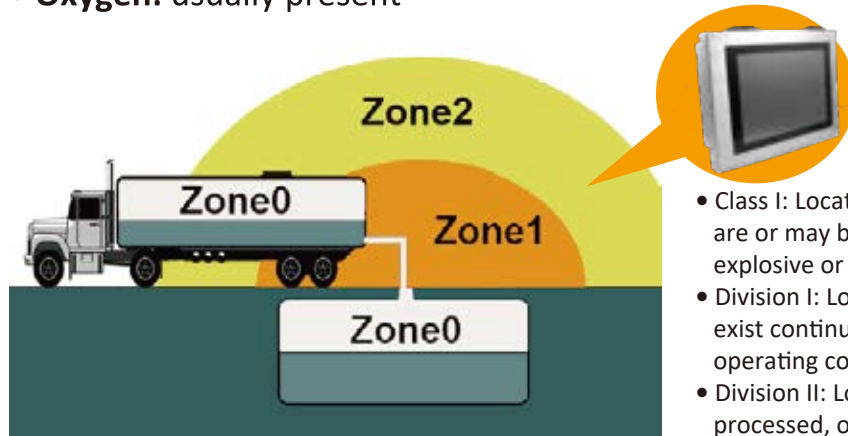
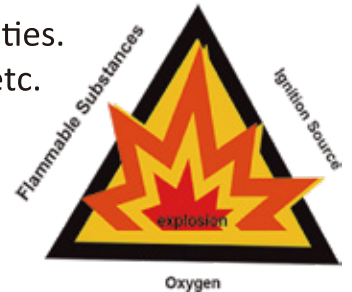
Explosion Proof ePlatform Solutions



When Will an Explosion Occur?

As a rule, the explosion can be occurred when three elements exist. The basic principle for explosion proof protection is to eliminate one or more legs of the explosion triangle.

- **Flammable material:** can be a gas, vapor or dust in sufficient quantities.
- **Source of ignition:** any source of energy, e.g. a spark or high temp etc.
- **Oxygen:** usually present



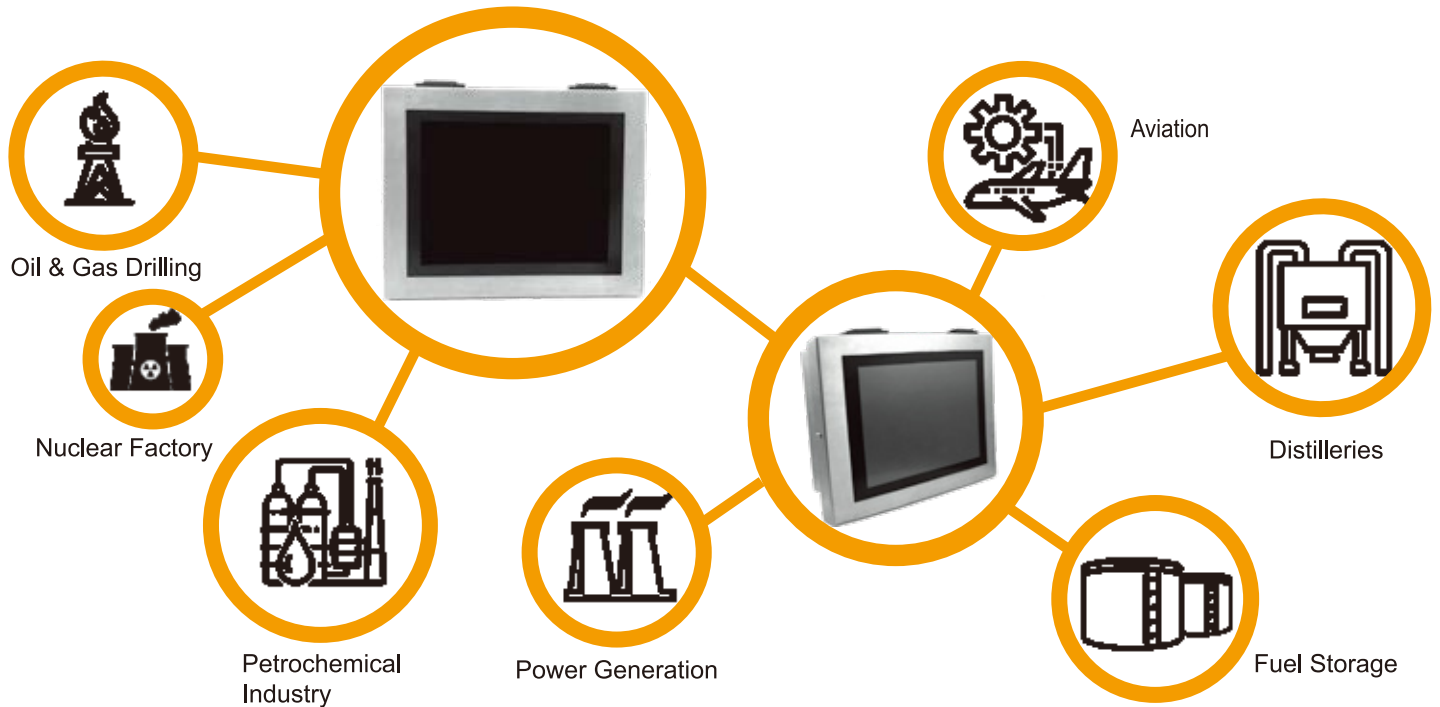
- **Class I:** Locations: Are those in which flammable gases or vapors are or may be present in the air in quantities sufficient to produce explosive or ignitable mixtures.
- **Division I:** Locations in which hazardous concentrations in the air exist continuously, intermittently, or periodically under normal operating conditions.
- **Division II:** Locations in which hazardous concentrations are handled, processed, or used but are normally within closed containers or closed systems from which they can escape only in case of accidental rupture or breakdown.

Why Explosion Proof Panel PC

<p>Easy installation via cable gland and connector panel, flexible & max support to 4 ports.</p> <p>Swappable M12 USB/COM connectors for hazard area installation.</p> <p>Expansion Design</p>	<p>15" 19" 21.5"</p> <p>Size from 15" to 21.5" TFT LCD</p> <p>Full Range of LCD Size</p>	<p>IP66 water/dustproof</p> <p>Touch on/off for hygienic cleaning</p> <p>Wide Temp. -20 °C~60 °C</p> <p>Robust Antenna</p> <p>Harsh Environment Solution</p>	<p>Class B</p> <p>High Quality & Customize Service</p>
---	---	---	---

The Explosion Proof Panel PC series are built to suit for hazardous environments, undergoing rigorous testing to ensure safety and top performance. It is capable of withstanding vibration, shock, corrosion and can operate under the condition of exposure to gas and vapor. All of the models in the Explosion Proof Series are sealed to at least IP66 standards offering the best solution for environments with explosion considerations. The Explosion Proof Panel PC works well in oil & gas industry, chemical manufacturing, power generation, distilleries and other hazardous industrial applications. Wincomm takes our users concern to meet ATEX Zone 2 / IECEx / C1D2 certificate and WTPE series provide extremely safty design to fulfill Ex-area application requirements.

Wincomm Explosion Proof Panel PC Series Applications



Equipments Monitoring

All data from pipe/ tank or equipment would be inspected or monitored and the information would be collected for adjustment or maintenance.

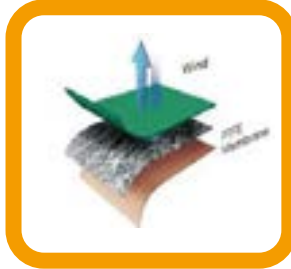


Real-time Controlling

In gas, oil industry or hazardous environments, real time controlling for power on/off and any other emergency maintenance via explosion proof panel PC is exactly required.



Features Highlight



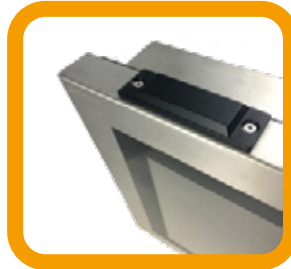
Powerful thermal solutions with stable CPU operation

1. Fanless cooling by high heat efficiency heat pipe and large heat dissipation heatsink, optimal MB power design to maximize power efficiency and minimize heat generation.
2. PTFE ventilation film to exhaust hot air for air pressure balance to avoid stainless steel case deformation; enclosure IP grade is still effective.



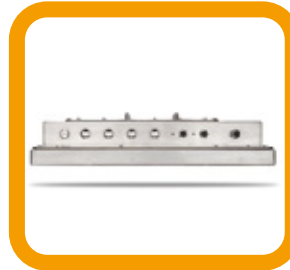
Extremely environment solution: wide range temp & water/dust proof

With special selected key components (ex. LCD, RAM, Storage, power module ...), large heat dissipation heatsink and Wincomm "pre-heating control system", WTPE products could be 24/7 operation under -20~60°C.



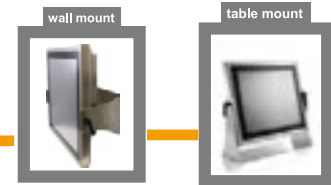
No corrosion after long-term usage

- With dedicated designs in
- Stainless steel covers, glands and screws
 - Robust connectors, seals, antenna covers
 - Touch screen bonded with LCD
 - Low power circuit in COM and touch screen
- WTPE series can be guaranteed no corrosion after long-term usage.



Saving space by downward I/O design

With minimized outside dimensions and downward external IO, it doesn't occupy but saving space.



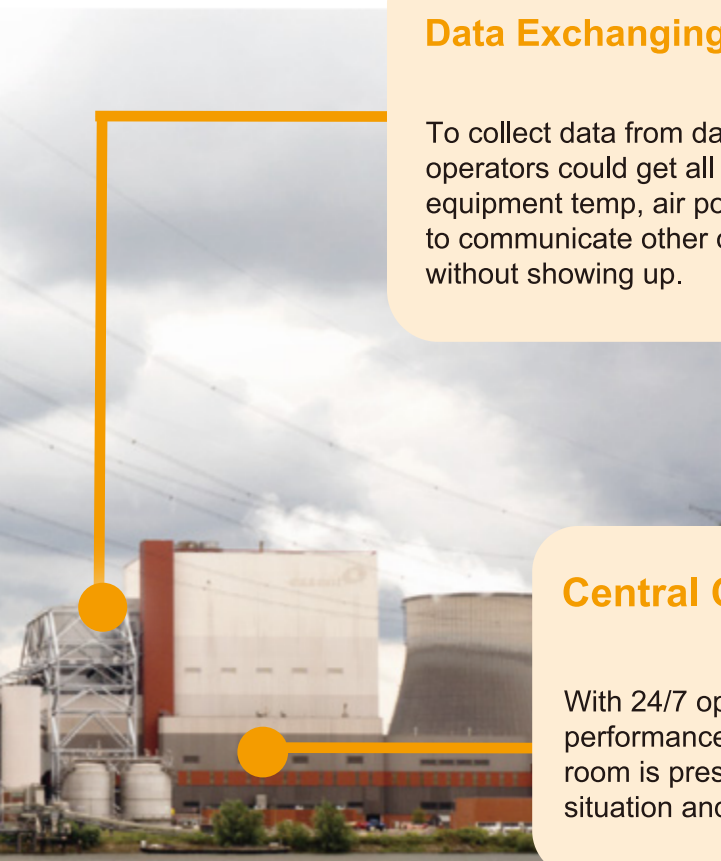
Data Exchanging & Collection

To collect data from dangerous field, operators could get all information of equipment temp, air pollution rate etc. to communicate other operated field without showing up.



Central Control Room

With 24/7 operation and high performance CPU, central control room is presented to deal with any situation and communication.



WTPE Panel PC Series

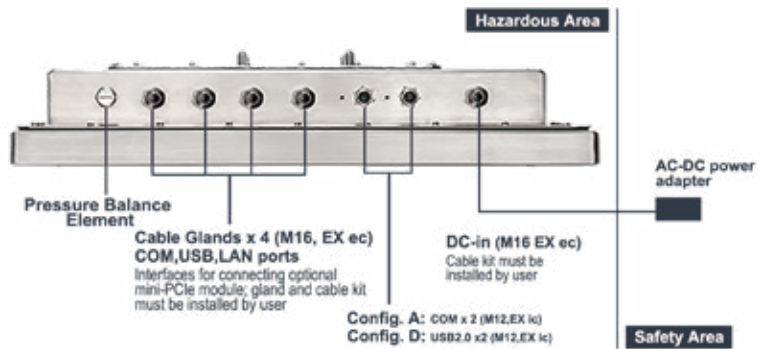


WTPE-9E66-15W (Front)

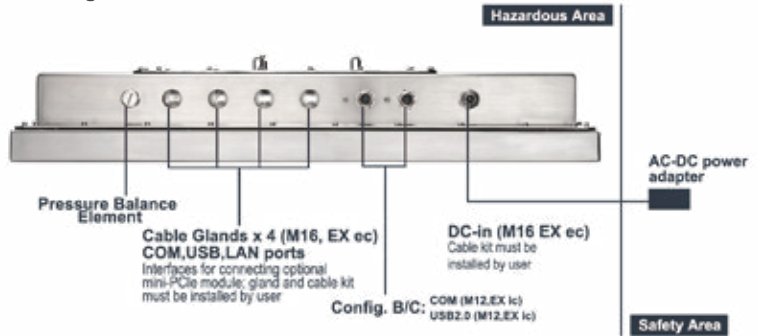


WTPE-9E66-15W (Back)

I.O. Configuration A,D



I.O. Configuration B/C



WTPE Series Selection Guide

ATEX, C2D2, IEXEx Explosion Proof Panel PC Series				
Product Name	WTPE-9E66-15W	WTPE-9E66-19W	WTPE-9E66-22W	
Main System				
CPU/ Graphics	FCBGA1356 6th generation Intel® Core i5 processor (15W max.)/ Intel® Graphics HD 520			
Memory	up to 32GB			
OS support	Win10 Embedded 64-bit / Windows 10 Professional 64-bit			
Display & Touch Panel				
Size	15"	19"	21.5"	
Resolution	1024 x 768(XGA)	1280 x 1024 (SXGA)	1920 x 1080 (FHD)	
Color Numbers	16.7M	16.7M	16.7M	
View Angle (H/V)	160/160	170/160	178/178	
Contrast	600:1	1000:1	5000:1	
Brightness (nits)	450	350	300	
Touch Panel	Full Flat Resistive Touch			
IO & Power				
I/O Ports	Configuration	A	B	C
	Swappable M12, 8pin (I.S. Output, Support EX ic, Extension Cable to Ex ic Devices)	2 x COM for RS232	1 x USB2.0 1 x COM for RS232	2 x USB2.0
	Cable Gland M16 (Max. Output x 4, Must be Installed by User)	2 x USB 2.0 (EX ec), 2 x LAN (EX ec, i219LM for Vpro), 1x COM for RS232/422/485 (EX ec), Optional 1 x Mini-PCIe Module for Cable Connection (EX ec)		
Power Input	DC 24V Input, M16 (EX ec, Must Be Installed by User)			
Power Adapter	100W with 24V DC output, with 1.2M cable, PSE			
Power Consumption	46.7W	53.5W	54.2W	
Storage & Expansion				
Storage	128G SSD			
Expansion slot	1 x Mini PCIe, 1 x M.2 Type E			
Mechanical & Environmental				
Weight (kg)	11	12.4	13	
Operating Temp.	-20~60°C			
IP rating	IP66 / NEMA4X			
Cooling	Fanless			
Power				
Power Input	1 x gland DC power			
Power Adapter	100W AC-DC power adapter with 24V DC output, 1.2M cable, PSE			
Power Consumption	46.7W	53.5W	54.2W	
Certification				
Certification	EMC: FCC, CE (EMC), VCCI Class B, Canada ICES-003, Safety: IEC-62368 CCC, IECEx, C2D2 Group F, G(15W/22W); C1D2 Group A, B, C, D T4 ATEX Zone2 EX II 3G Ex ic ec IIC T4 Gc IP66, TS Mark (Taiwan) Ex ic ec			

About Wincomm Corp.

Wincomm is one of Taiwan's leading manufacturer of industrial computer and embedded computer products. Wincomm designs and develops all in one panel PC, large size all in one digital signage system, rugged box PC and embedded software products for a broad range of industries and applications. Wincomm aims to provide hardware and software integrated solutions for the most variant environments such as industrial automation/ human machine interface control, digital signage / infotainment Kiosk, and medical computing.

Application



Petrochemical Industry

Oil & Gas Factory



Headquarters

3F, No. 14, Prosperity Road II, Science-Based Industrial Park,
Hsinchu, Taiwan, R.O.C.

Tel +886 3 578 0000

Fax +886 3 577 0631

sales_support@wincomm.com.tw

Wincomm USA

2138 Ringwood Avenue, San Jose, CA 95131 USA

sales_support@wincomm.com.tw

Wincomm Japan

#206, 4-16-17, Namiki, Kawaguchi-City, Saitama, 332-0034, Japan

sales_support@wincomm.com.tw

